

At the Institute

2020-2021 Annual Report

The text of the report is arranged in a circular pattern, spiraling inward from the outer edge to a central point. The text is written in a serif font and covers the entire page area, forming a large, intricate spiral that resembles a nautilus shell or a galaxy. The text is dense and continuous, following the curve of the spiral. The central point of the spiral is a small, dark circle.



THE C.G. JUNG INSTITUTE
OF SAN FRANCISCO

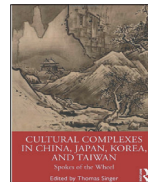
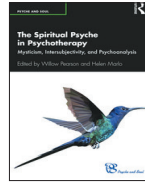
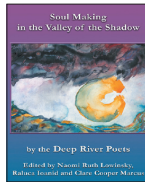
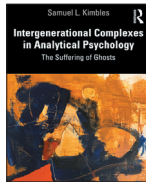
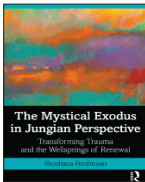
THE C.G. JUNG INSTITUTE OF SAN FRANCISCO

INSTITUTE STAFF

Administrative Director	Steve Hargis-Bullen
Executive Assistant	Dale Eastman
Whitney Center Director	Gale Lipsyte, PhD
Whitney Center Coordinator	Deborah Igoa-Kuhn, MFT
Library Manager	Miranda Lindelow
Library Assistant	Brian Carr
Public Programs Manager	Rick Borutta
Training Administrator	Helene Dorian
ARAS Curator	Stacy Hassen, PhD
<i>Jung Journal</i> Editor	Jeffrey Moulton Benevedes, PhD
Bookkeeper	Brad Pence, CPA

PUBLICATIONS

Books by analyst members published in 2020-2021:



The Mystical Exodus in Jungian Perspective: Transforming Trauma and the Wellsprings of Renewal by C. Shoshana Fershtman ♣ *Intergenerational Complexes in Analytical Psychology: The Suffering of Ghosts* by Samuel Kimbles ♣ *Soul Making in the Valley of the Shadow* edited by Naomi Ruth Lowinsky, Raluca Ioanid and Clare Cooper Marcus ♣ *The Spiritual Psyche in Psychotherapy: Mysticism, Intersubjectivity, and Psychoanalysis* co-edited by Willow Pearson and Helen Marlo ♣ *Vision, Reality, and Complex and From Vision to Folly in the American Soul*, both essay collections by Thomas Singer; *Cultural Complexes in China, Japan, Korea, and Taiwan: Spokes of the Wheel* edited by Thomas Singer.

FRONT COVER: *The Secret of the Golden Flower*, 2018; letters cut from the *Bible*, thorns; by Meg Hitchcock.
(visit: www.meghitchcock.com)

CONTENTS



3

From The President

Carolyn Bray reflects on recent challenges, successes and the Institute's new home.

5

New Offerings

Michael Bala on the impact of studying depth psychology with others.



8

No Small Task

Training to work analytically with children and adolescents.

10

Private Explorations

Guy Albert looks at Institute services you can access on your own.



15

Donors

The Institute receives a transformative bequest.



Untitled, Susan Bostrom-Wong, 2021.

This has been a time of unusual challenges and significant accomplishments. Our community has demonstrated how we adapt through conscious presence, a sense of purpose and ethical compass. The pandemic has unified us with world neighbors, a connection that was also reflected in our international Analysis and Activism conference.

Through video conferencing, the Institute's Jungian Oriented Psychotherapy course expanded its outreach to licensed psychotherapists interested in a Jungian approach to doing psychotherapy. This was so successful that a second course was added to accommodate all who enrolled.

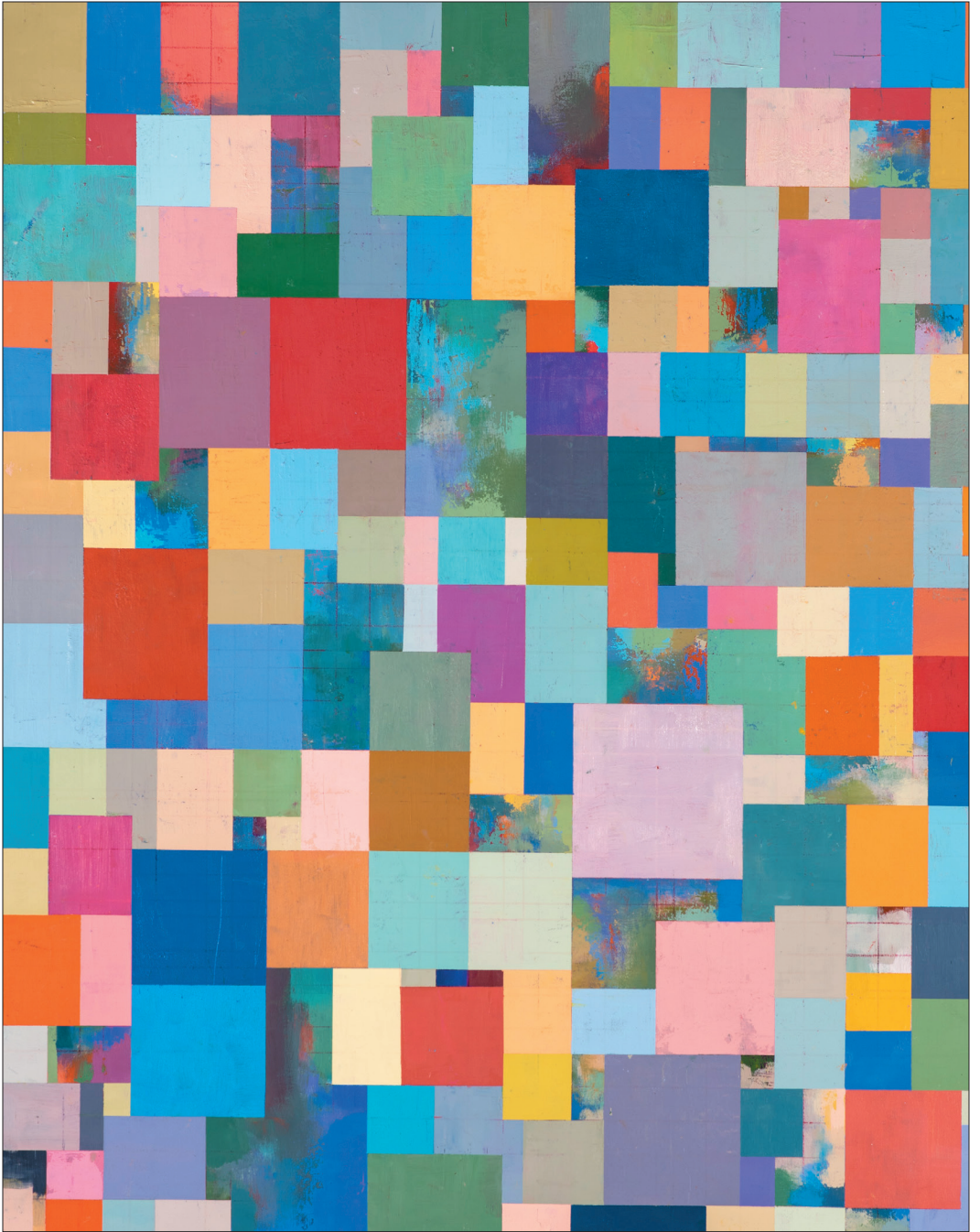
We have withstood several external stressors in addition to the alienating pandemic—the urgent need to address the racial inequity around and within us, national political tensions, the unsettledness of being in limbo between physical homes, and the associated financial uncertainty. Still, we have maintained our connection and stability, continuing to act as a learning community.



Carolyn Bray, PhD
President, 2020-2022

We have succeeded in creating a new home that will be safer and accommodate more people and services. Consistent with our ideas of being good neighbors and with our moral ethics, we have arranged to restore, at our expense, a 20-year-old sidewalk mosaic by the artist Joe Mangrum that must be temporarily removed in order to add the upgraded water and electrical connections that the City requires for our building at 2610 Mission St.

In challenging times, we desire to listen carefully, follow our hearts, and take the illuminated steps ahead of us.



Unus Mundus, QiRe Ching, 2021

NEW OFFERINGS

Studying Depth Psychology With Others

By Michael Bala

It is natural that analytical psychology has been studied in groups from its earliest days in the circle of therapists and lay people around Jung. Witnessing a psychologically diverse group react to ideas is a powerful way to evaluate their validity. In these settings, creative contributions to the understanding of Jungian thought can emerge. Long and deep friendships also are likely to develop.

The word education derives from the Latin *exducere*, which means to consider, to regard, and to draw forth. Individuation can be understood also as a drawing forth, a movement from where one has been psychologically toward where one needs to be to feel more whole.

In 2020-21, with the help of the Extended Education Committee and Public Programs Manager, Richard Boruttta, the Institute initiated a new Jungian Oriented Psychotherapy course for licensed psychotherapists wanting professional instruction in Jungian concepts and clinical applications. Taught by Institute analysts, this course presented a ten-month series of weekly classes on key topics in Jungian thought and practice. Due to COVID-19, the course was produced live, in an online format. A total of 48 psychotherapists enrolled. In 2021-22, the Jungian Oriented Psychotherapy course will again be offered, and for those who completed this past year's course, a new multi-month course entitled "Enhancing the Work" will be available. It will build upon and expand the study begun in the Jungian Oriented Psychotherapy course.

Each of these courses encompasses a rich and dynamic study of Jungian concepts and clinical practices, offering participating psychotherapists useful new perspectives that they can apply in their work.

PROGRAMS & SERVICES

The James Goodrich Whitney Center For Psychotherapy

*has been serving the Bay Area for more than 50 years, offering low-fee services to adults unable to afford private fees but who are interested in longer-term depth psychotherapy informed by Jungian theory. We see individuals and couples from the Bay Area, including students and people involved in the arts. Our clientele is ethnically diverse and inclusive of the LGBTQ+ community. For information, including details about teletherapy, contact Whitney Center Coordinator Deborah Igoa-Kuhn at clinic@sfjung.org or 415-771-8055, ext. *205.*

Referral Services

*are free, confidential and offered in person, by phone, or over the Internet by Institute analysts. We connect individuals and couples with a licensed Jungian analyst or candidate who matches their needs. Interested persons may call 415-771-8055, ext. *205, or email clinic@sfjung.org for more information or a free consultation.*

The Virginia Allan Detloff Library

offers access to what we believe is the third largest Jungian library in the English-

*speaking world. Annual membership is \$65, and provides members with the use of over 15,000 books, journals, recordings, and online repositories. For questions (including hours of access, which can fluctuate), email library@sfjung.org, visit www.sfung.org/the-virginia-allan-detloff-library/ or call 415-771-8055, ext. *207.*

Friends of the Institute offers a way to affiliate with the C.G. Jung Institute of San Francisco and others who find value in studying and applying the insights of Jung and his intellectual heirs. Everyone is welcome to attend events; Friends members get in free. Membership guarantees early registration and copies of our biannual newsletter, RHIZOME. We also offer Jungian-oriented reading groups, on-site access to ARAS, and Institute library privileges. To join, visit www.sfung.org or phone Helene Dorian at 415-771-8055, ext. *210.

ARAS: The Archive For Research In Archetypal Symbolism

is a curated, online collection of more than 18,000 archetypal images and accompanying text. The archive enables the exploration of and reflection on archetypal themes that reveal the deep and abiding connections of humanity and our more-than-

In addition to courses for psychotherapists, the Institute's Extended Education team produces an array of programs for the general public. Especially exciting is a new course, Jungian Psychology in Everyday Life. Designed to deepen participants' understanding of Jungian thought, this once-a-month course will offer eight classes. Subjects to be explored in the 2021-22



Mural of Miwok Village by Third Grade Students,
Tom Scheaffer instructor,
Lu Sutton School, 2013.

course include ego, persona, and shadow; personal complexes; cultural complexes; the Self; the Transcendent Function; dreams and dreamwork; later life individuation; and alchemy. We envision each of these courses continuing into the next years, even as we also produce workshops, conferences, and classes of the kind that have historically comprised our non-clinical and clinical educational programming.

The Extended Education Committee appreciates the synergy of the offerings of the membership organization, Friends of the Institute, as it hosts regular opportunities to gather, connect, and explore areas of psychological interest including, especially, the relationship between psyche and culture. Membership is \$80 per year and includes access to the Institute's digital and physical library as well as admission to Friends events and discounts to some other courses offered at the Institute. ☸

human world. The treasury of symbolic images, accessible at www.aras.org, also has complementary online offerings: books, articles, ARAS Connections newsletter, and a tool to search Jung's Collected Works by keyword and topic. Friends of the Institute members have access by appointment. Schedule an appointment with our curator in San Francisco by emailing aras@sfjung.org. To subscribe to ARAS, go to www.aras.org/join.

Jung Journal: Culture & Psyche

is a quarterly, international, peer-reviewed interdisciplinary periodical published by the C.G. Jung Institute of San Francisco. As a forum devoted to depth



Journey Tracks To Sacred Water Sites: Meeting Places, Tony Sorby, 2020.
(Artist bio: <http://www.kateowengallery.com/artists/Ton929/Tony-Sorby.htm>)

psychology, it fosters creative dialogue, exploration and evolution of topics of relevance to analytical psychology, the arts and humanities, and contemporary culture. Through articles, reviews, interviews, poetry, and various art forms, the Journal's mission is to plumb the mysterious depths of the psyche both within the individual and in the larger world, highlighting Jung and the post-Jungians.

Extended Education

*brings together people from outside and inside the Institute through innovative classes and workshops that apply the perspective of depth psychology and offer new approaches to clinical practice and the contemporary world. Courses, many of which give continuing education credit for clinicians, are facilitated by analysts and professionals in related fields, including the arts. To register for courses, visit www.sfjung.org/public-programs-and-extended-education/, where you will also find information about whether courses are being held in person or online. For questions, email programs@sfung.org, or call 415-771-8055, ext. *208.*

Analytic Training Program, *a central aspect of the Institute's life, welcomes licensed psychologists, psychiatrists, clinical social workers, and marriage and family therapists. We offer two Public*

No Small Task: Training to Work Analytically with Children and Adolescents

By Margo Leahy and Audrey Punnett

The Infant, Child, and Adolescent Training (iCAT) Program of the C.G. Jung Institute of San Francisco is one of a small handful of training programs around the world in Jungian child analysis. It has a multidisciplinary faculty of fourteen analysts certified in child as well as adult analysis. The origins of analytic work with children trace back to Jung's earliest observations about the significance of the infant-mother relationship, which were further developed by his followers Michael Fordham and Erich Neumann.

Research over the last thirty years has supported the importance of and provided a sound scientific basis for Jungian-based child analytic work. A central and also unique feature of Jungian child analysis is its focus on the individual the child is from birth onward. This allows the child to be understood within the larger context of individuation as problems in adjustment are addressed. Treatment ranges from symbolic play to interpersonal dialogue. Sessions may include discussion of dreams and fantasies. In contrast to other analytic approaches, Jungian analysts ask the question: "What is happening to this child that has caused him or her to have these particular problems?" This allows the child analyst to understand the unfolding conscious and unconscious elements which underlie the child's current predicament. In 2018, members of the faculty joined to produce a book, *Jungian Child Analysis*, edited by Audrey Punnett, which has become a valued reference for child work in the analytic community.

Generous support from Kay Bradway, Jungian analyst and founder of international and national sandplay societies, and her husband, Firman, enabled the creation of our Institute's first child program, which has been able to expand its range to address work with both infants and adolescents.

The two-year program offers a comprehensive study of the emotional life of a child in the multiple contexts of family, peer group, school and the wider culture. Trainees must already have a basic knowledge of child development and an established child psychotherapy practice. Throughout training, they meet in weekly clinical case consultation with an iCAT faculty member. In addition, each trainee undertakes a year of infant observation and meets with an infant observation group led by faculty. A second year is devoted to



Illustration by Diana Ejaita @ www.dianaejaita.com/.

the study of Jungian child analytic theories and practice taught in monthly, weekend seminars on dreams, symbolic play, and uses of imagination. In our Dual Program, Candidates pursue their infant, child, and adolescent analytic training alongside adult training. Over time, the impact of iCAT training will benefit thousands of infants, children, and adolescents in treatment with the therapists we train. 🌱

*Service Fellowships that provide a stipend to clinicians who work at least half time in a public mental health setting. This provides assistance to clinicians in our community who would otherwise not be able to afford analytic training. For more information, see www.sfjung.org/clinical-training-at-the-c-g-jung-institute/, email hdorian@sfjung.org, or call Helene Dorian at 415-771-8055, ext. *210.*

Infant, Child and Adolescent Training Program (iCAT)

*is for Jungian candidates and analysts who have completed requisite child training in their respective disciplines and have had an ongoing child and adolescent clinical practice for several years. Our 2-year program provides in-depth exposure to Jungian infant/child/adolescent therapy, the intersection of theory with contemporary developmental work with children and adolescents, and techniques of analysis. For more information about the iCAT Training Program, visit www.sfjung.org, email hdorian@sfjung.org, or call Helene Dorian, 415-771-8055, ext. *210.*

International Analytical Psychology Scholar Program

is an advanced training opportunity: a two-year course of

intensive study in analytical psychology for a mental-health professional from a country where formal Jungian analytic training is not yet available. The scholar's home community benefits when he or she returns to help develop a Jungian presence.

Analysts of the C.G. Jung Institute of San Francisco

include 140 analyst members, almost equal in number between women and men, who carry on the Institute's work of Jungian analysis. All are licensed, trained and certified in analytical work; individually they are members of the International Association for Analytical Psychology (IAAP). The Institute is served by a committed, active and generous corps of analysts who volunteer their time. Most members also make financial donations to the Institute beyond their substantial dues.

International Association for Analytical Psychology (IAAP)

facilitates connections between more established member groups and the smaller and/or developing ones, providing the consistency and guidance necessary for development of new centers of Analytical Psychology. San Francisco has long been a source of dedicated analysts to help with this essential function.

Private Explorations: Services To Access On Your Own

By Guy Albert

The C.G. Jung Institute of San Francisco may be known for its generous offering of lecture series and training programs, but the Institute is also home to more private explorations, with much to offer the introvert in all of us! Imagine yourself writing a research paper on a particular archetype, or having an image appear to you repeatedly in different contexts or remembering a particular dream that you want to explore. There are resources at the Institute to help you indulge the psyche's natural curiosity.

Among these are The Virginia Allan Detloff Library and the Archive for Research in Archetypal Symbolism (ARAS). The Library's book and journal collection has captured the attention of many wandering through the Institute. One's eye might suddenly be drawn to a particular title or book cover resonating with a personal, internal process. Those inclined toward a deeper inquiry might want to delve into the Library's archive, featuring unpublished materials on analytical psychology and the history of Jungian psychology. Among these are diaries, reflections, and dream interpretations by early Institute analysts, letters to and from first generation American Jungians or from C. G. Jung himself, and photographs from the early days of the Institute to the present.

The Library Manager, Miranda Lindelow, is always eager to support anyone interested in learning more about the complete collection or any of its parts. In the new building, the Library offers more places to sit and read, work, and contemplate. The Library is also connected to other libraries and databases, extending its offerings exponentially.

For an exploration geared toward pictures rather than words, ARAS offers more than 18,000 images representing various pictorial



symbols from throughout the ages and around the world. ARAS is a collective collaboration of several institutes offering a rich and ever expanding collection of physical and online resources, many of them available for free. ARAS is more than just a collection of pictures: it invites us to discover the soul of each image and the power of symbols. Each of the collection's images is cross-indexed and accompanied by a full scholarly commentary establishing its historical and cultural context. Access to San Francisco ARAS, which houses some of the whole collection, is available by appointment. By becoming a Friends of the Institute member (\$80 per year), you can enjoy online and in-person access to the Virginia Allan Detloff Library collection and services and complimentary personalized appointments with the curator of the ARAS collection, Stacy Hassen, PhD.

A program of the Institute with a still more global reach is *Jung Journal: Culture & Psyche*, a fertile combination of scholarly

writing, artistic and poetic vistas, and reviews of books and film. The *Journal* represents diversity in thought, creativity and perspective from a broad array of contributors. A recent issue zeroed in on the Jungian clinical experience. For \$95, readers can subscribe to the *Journal*. Individual articles can be downloaded from the Taylor and Francis website.

The adventurer of inner landscapes can also seek personal psychotherapy or analysis. To help you locate a clinician, the Institute has a Referral Service and also offers therapy on a sliding-scale basis through its James Goodrich Whitney Center for Psychotherapy. 🌐

Migration Panel 58, Jacob Lawrence (1917-2000).

© 2021 The Jacob and Gwendolyn Knight Lawrence Foundation, Seattle / Artists Rights Society (ARS), New York



FROM THE WHITNEY CENTER DIRECTOR

In the spirit of expansion and welcome, the James Goodrich Whitney Clinic has evolved into the James Goodrich Whitney Center for Psychotherapy. It's a slight name change that's wrapped around a constant: our dedication to Dr. Whitney's vision of unhurried Jungian-informed depth psychotherapy available to all in our Bay Area community.



Gale Lipsyte, PhD
Whitney Center Director

This has been a year of challenges and disruption. The Bay Area community we serve still faces the pandemic, persistent injustice and inequality, financial hardship and emotional upheaval. We depend on our deeper psyche, where creative, transformational forces can be accessed to help us manage, understand and make meaning of our struggles.

Through the work at the Center, whether online for telehealth or in our new consulting rooms at our Mission Street location, we welcome people to connect with us. The nine talented new and continuing interns serving in our rich and rigorous internship program, bring energy and dedication, diverse cultural and clinical experience, curiosity, love for learning and deep empathy to their work. They are supervised, taught and mentored by analysts of the C.G. Jung Institute of San Francisco.

Analytic candidates of the Institute also form a part of the Center, as well as analyst members who offer their service to the wider community through the Center.

As we look forward, we continue to be grateful for the generous donors who support our commitment to this work, and to those who created our foundation, in theory and in practice.

*For questions, email clinic@sfjung.org or call 415-771-8055, ext. *205.*

THE TRAINING PROGRAM

This is a propitious time for the Analytic Training Program. With the move to the new building on Mission Street, the Institute will welcome current and future candidates to a learning center and library equipped to provide advanced clinical training for therapists and through sliding-scale psychotherapy services for the general public.

Analytic training focuses on the application of the core concepts of the Jungian analytic process and of the contributions of diverse post-Jungian thinkers and healers. The Institute appreciates the substantial, varied educational experiences that analytic candidates bring as licensed professionals. The commitment that is required of analytic candidates is met with equal dedication by the ongoing learning community they are entering into. Participation in this shared community can enhance the individuation of every participant. Analysts on committees responsible for training meet regularly with the Institute's President and Vice President, who themselves attend annual meetings with the training directors of other Jungian analytic societies on the North American Continent, so that we stay current in our understanding of how the training experience can be made as nourishing as possible to the clinical growth of our analytic candidates.

Even as the Institute welcomes new candidates to the 2021-22 academic year, we also look forward to answering questions from licensed California therapists who satisfy the requirements on our website and who are drawn to the training opportunities and depth psychological community the Institute offers. Admissions Committee members can be reached through Training Administrator Helene Dorian, hdorian@sfjung.org.



Alex Peer, PhD
Vice President, 2020-2022

*For questions, email
hdorian@sfjung.org, or call
Helene Dorian at
415-771-8055, ext. *210.*



A YEAR OF REMARKABLE GIVING

By Adam Frey, volunteer fundraiser


In the autumn of 2020, a donor who prefers to remain anonymous offered an astonishing \$1 million quintuple challenge gift for the Institute's Building Fund, explaining that the Institute could earn the gift by raising \$200,000 from other donors. With the participation of many donors, 65 of whom underwrote specific pieces of furniture needed for the new building, the Institute completed this match in early 2021.

Then, in the spring, the Institute received a multi-million-dollar bequest from the estate of Peter Sheldon of Standish, ME. A beloved teacher of English and art history at St. Joseph's College, Mr. Sheldon designated his bequest "to further the purposes of the *San Francisco Jung Institute Library Journal*." Now called *Jung Journal: Culture & Psyche*, the *Journal* was inaugurated in 1979 to support the Institute's library and provide a forum for the analytical exploration of books, films and ideas.

This is the second time that the Institute has received a very large bequest from a donor whose connection to the organization has

been through the publications of its analyst members. The first was from Victor Grohmann in 2019.

The names of donors whose bequests have benefited the Institute appear below. On the following page, you will find a list of living donors who have arranged bequests to benefit the Institute in a future time.

We are grateful to all the donors and volunteers whose names appear in the following pages. 

Atrium of new building (at left)
Deborah O'Grady,
Photographer
2021

DONORS WHOSE BEQUESTS HAVE BENEFITED THE INSTITUTE

Elizabeth Ayer
Kay & Firman Bradway
Kathleen Burgy
Elizabeth Chamberlain
Margaret Davis
Bruce Detloff
Phyllis Dexter
Sally Dommerich

David B. Felch
Ruth Foster
Helen Griffin
Victor Grohmann
Ruth Hanicker
William Howe
Marna Jacobsen
Frances Lana
Jean Norton

Gladys Phelan
June Singer Sunshine
Dennis Turner
Inge von der Hude
Joan Alpert Wentz
Jane Wheelwright
Deborah Whitney
Frances Wickes

DONORS | JULY 1, 2020 – JUNE 30, 2021

BEQUESTS ARRANGED

Anonymous
Barbara Arden Adams
Claire & Kendall Allphin
Johanna & Thomas Baruch
Ellen Becker & Howard Hamburger
John Beebe
Susan Bostrom-Wong
Mary Boyvey
Mary Macey Butler
Virginia Choo & James Thweatt
Marie & Brian Collins
J. Maureen Cook
Claire Costello
Laurie Edwards
Adam Frey
Gail Grynbaum & John Theede
Louise Heyneman
Ruth & Gareth Hill
Valerie Hone
Jean & Thomas Kirsch
Elizabeth M. Lewis & David Thier
Naomi Ruth Lowinsky
Betty De Shong Meador
Bonnie & Richard K. Payne
William Riess
Karen Signell
Patricia Spake
Suzy Spradlin
Charlotte von der Hude

BEQUESTS RECEIVED

Estate of Helen Griffin
Estate of Peter L. Sheldon

ANNUAL & BUILDING FUND

Dean Abramson
Guy Albert
Sheila Albert
Claire & Kendall Allphin
Scott Alvarez
Nickie Amerius-Sargeant
Analytical Psychology Club of San Francisco
Anonymous (4)
Kai Arden
Elaine & Arthur Aron
Lauren Artress
Charles Asher
James & Jennifer Bae
Laurie Baker
Michael Bala
Beth Barmack
Johanna & Thomas Baruch
Lindsey Beaven
Ellen Becker & Howard Hamburger
John Beebe
Jeffrey Moulton Benevedes
Karen D. Benson
Adam Beyda & Lauren Webster
Jean Shinoda Bolen
Susan Bostrom-Wong
Mary Boyvey
Carolyn Bray
Mervyn L. Brenner Foundation, Inc.
David Brown
Sarah Brown

Mary Macey Butler
Susan & Kent Calfee
Joseph Cambray
Candidates Organization
John Carmody
Robert Carriger
Athena Carrillo
Virginia Chen
Fran Cherlow
Maria Ellen Chiaia
Allan Chinen
Rusa Chiu
Virginia Choo
Betsy Cohen
Brian & Marie Collins
Christopher Collins
J. Maureen Cook
Claire Costello
Peter Coukoulis
Mary & Carl Culberson
Lauren & Christopher Cunningham
Linda Cunningham
Steven Curley
Patricia Damery
Carole Deitrich
Levon Der Bedrossian
Diane Deutsch
Kate Donohue
Claire Douglas
Deborah Dunning
Laurie Edwards
Lynne Ehlers
Kathleen Epperson
C. Shoshana Fershtman
Kevin Filocamo
Paul Fishman
Berne Fitzpatrick
Charles Fleckles

Lynn Alicia Franco
 Adam Frey
 William H. Frey, II
 Patricia Frisch
 Steven Frus
 Steve & Tia Galipeau
 Baruch Gould
 Gwendolyn Gowing
 Carlos Greaves
 Michael Grubb
 Christina Halsey
 Hollie Hannan
 Steve & Alice Hargis-Bullen
 Lauri Harper
 Justin Hecht
 Christine Hejinian
 Marla Herbig
 Louise & Donald Heyneman
 W. Ladson Hinton, III
 Charmaine Hitchcox
 Barbara Holifield
 Kristina Holland
 Peter Holland & Dolores
 Saluppo
 Sally Holland
 Valerie Hone
 Edward Hopkins
 Pi-Chen Hsu
 Sheila Humphreys
 Margaret Huntington
 Juan Ibarra
 Florence & Alexander Irvine
 Steven Joseph
 Shirley Kaiser
 Sally Kaufmann
 Alex Kettner
 Jean Kirsch
 Jim Klippert

Thomas Knoblauch
 Neil Kostick
 Leonard Kreit
 Michelle Krezanoski
 Steven R. Krolik
 Harold Kruth
 Amy Lawrence

Virgilia Mapa
 Clare Marcus
 Helen Marlo
 Michael Marsman
 David Martinez
 Faith Mason
 Felicia Matto-Shepard
 Georgia L. May
 Johanna Mayer
 Frances McCormack
 Lori & Michael McKenzie
 Carol McRae
 Felicia Matto-Shepard
 Helen Mendenhall
 John K. Miles & Priscilla S.
 Peters
 John Miller
 Phillip Moffitt
 Cecile Moochnek
 James Moran
 Kathleen Murphy
 Gordon Murray
 Carol Nagle
 Karen & Sam Naifeh
 Marjorie Nathanson & Ted
 Keeler
 Eileen Nazzaro

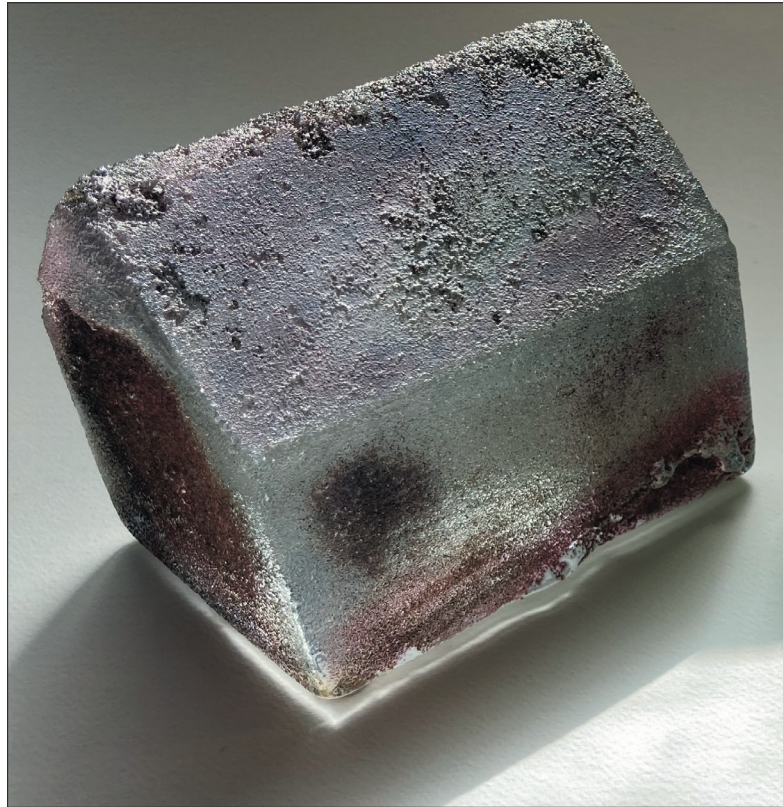


Infinity, Gwendolyn A. Magee, 1995.
 Courtesy of Estate of Gwendolyn A. Magee.

Margo Leahy
 Elizabeth Lewis & M. David Thier
 Jiangxue Li
 Erin Lindvall
 Helen Link
 Gale Lipsyte
 Naomi Lowinsky
 Judith Loveless
 Francis Lu
 Rebecca Macieira-Kaufmann
 Abby Maimon

Nnenna Ndika
 Jean Nyland
 Deborah O'Grady
 Suzanne Oberlin
 Katherine Olivetti
 Susan Pain
 Bonita Ann Palmer, MD, MFT
 Jesse Patrick
 Bonnie & Richard K. Payne
 Alexander Peer
 Mark Hazard Peterson

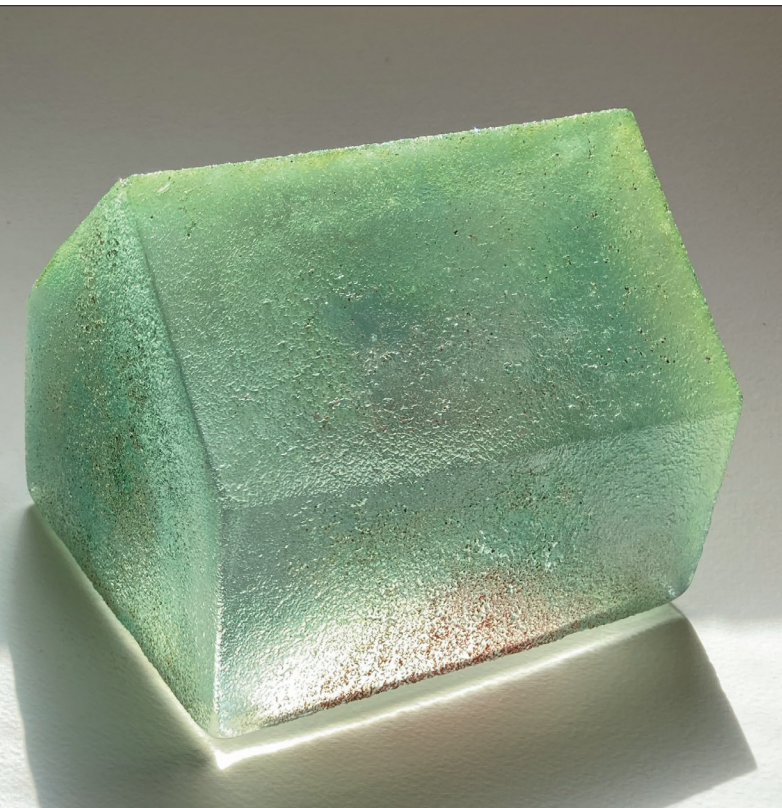
Sara Peterson
 Michael & Meili Pinto
 Neville Powers
 RHE Charitable Foundation
 Dawn Ramm
 Blake Rawdin
 Michael Reding
 The Riess Family
 Suzanne Riess
 William & Ray Riess
 Christopher Roach
 Janet Robinson Vuksinick
 William Rogers II
 Jeanine Rose
 Carolina Rosales-Wyman
 Kathleen Rose
 Susan Ruskin
 Peter Rutter
 Meredith Sabini
 Salesforce.org
 Lynda Schmidt
 Jessica Sherman
 Eve Shulmister
 Thomas Singer
 Sareena Singh
 Margaret Skinner
 Yvonne Smith Tarnas
 Laura Soble
 Patricia L. Speier
 Anna Spielvogel & Maung Tin-Wa
 Suzy Spradlin
 Mia Stageberg
 Mario & Helena Starc
 Marianne Stefancic
 Erika Steffe
 John Steinhelber
 Phyllis Stowell
 Ann Strack



Tina Stromsted
 Dorothy Stump
 Mark & Barbara Sullivan
 Sally Taylor
 Susan Thackrey
 Paul Turner
 Mary Valtierra
 Thomas Varner
 Stephen Vernon
 Leopoldo Villela
 Charlotte von der Hude
 Suzanne Wagner
 Glenn Waters

Paul Watsky
 Amy Weston
 Catherine White
 Kathleen Goodrich Whitney
 Richard & Heidi Willetts
 Peggy Winnett
 Scott Wirth
 Katy Wray
 Julie Wright

Two Homes
 Michael Bala
 Sand cast glass, oil paint
 1991/2021



ARAS

Janet Robinson Vuksinick
Thomas Singer

CLINIC

Scott Alvarez
Janet Robinson Vuksinick

CURRICULUM

John Beebe

EXTENDED EDUCATION

Robin Eve Greenberg

FRIENDS OF THE INSTITUTE

Mary Boyvey
Erin Bucci
Carmen Ada Gonzalez
Charmaine Hitchcox
Amanda Holguin
Jeff Howlin
Patricia Katsky
Jim Klippert
Barbara Laffey
DeLee Lantz
Maria Linsao
Suzanne Marriott

Kathleen Rose
Paula Ste. Marie
Adeline Townsley
Diana Waszczuk-Howlin
Sheila Zarb-Harper

**The Friends of the Institute
extend a special thank you to
all who donated to attend our
events.*

JUNG JOURNAL

Charlotte von der Hude
Robin Eve Greenberg

LIBRARY

Charlotte von der Hude

GIFTS IN KIND

Bruce Baker
John Beebe
Adam Blau
Susan Bostrom-Wong
Betsy Cohen
Gail Grynbaum
Janet Robinson Vuksinick
Scott Wirth & Bryan Wittine

GIFTS IN MEMORY OF

Susan Asher from Charles Asher
Hal Batt from J. Maureen Cook
Dr. Joe Cosgrove from Thomas
Knoblauch
Dr. Carl Culberson from Edward
Hopkins
Dr. Carl Culberson from Susan
Pain
Millie Fortier from Steven Joseph

Millie Kelly Fortier from Frances McCormack

Ian J. Grand from Maria Ellen Chiaia

Helen Griffin from James Griffin

Florence Grossenbacher from Frances McCormack

Anya Humphrey from Mia Stageberg

Paul David Kaufmann, MD from Rebecca Macieira-Kaufmann

Paul Kaufmann, MD from Lori & Michael McKenzie

Carlos F. Martinez, MD from Mary Macey Butler

Penelope Mastt from Athena Carrillo

Dr. Rollo May from Georgia L. May

Tom Richardson from Marjorie Nathanson & Ted Keeler

Gregory Leon Roach from Christopher Roach

Donald Sandner, MD from Claire Costello

Donald Sandner, MD from Charles Fleckles

Donald Sandner, MD from Carol McRae

Donald Sandner, MD from Meredith Sabini

Paul Sarbanes from Cecile Moochnek

Denis & Rosa Savage from Anonymous

Richard Stein from Mary & Carl Culberson

Katharina Wagner from Marianne Stefancic

Jane Wheelwright from Erika Steffe Jo & Jane Wheelwright from Lynda

Schmidt

James & Elizabeth Goodrich

Whitney from Kathleen Goodrich

Whitney

GIFTS IN HONOR OF

John Beebe from Jiangxue Li

John Beebe from Jean Nyland

Joan Chodorow from Kate Donohue

Adam Frey from Felicia Matto-Shepard

Louise Heyneman from RHE Charitable Foundation

Gareth Hill from Sheila Humphreys

Bill Riess from the Riess Family

Alan Ruskin from Sheila Albert

VOLUNTEERS

ANALYTIC TRAINING

Nickie Amerius-Sargeant

Kai Arden

James Bae

Beth Barmack

Ellen Becker

John Beebe

Susan Bostrom-Wong

Fanny Brewster

Maria Ellen Chiaia

QiRe Ching

Rusa Chiu

Betsy Cohen

Claire Costello

Christopher Cunningham

Lauren Cunningham

Diane Deutsch

Paul Fishman

Adam Frey

Lori Goldrich

Barbara Holifield

Peter Holland

Virginia Humphrey

Margo Leahy

Gale Lipsyte

Helen Marlo

Felicia Matto-Shepard

Carol McRae

Karen Naifeh

Sam Naifeh

D. Steven Nouriani

Ruth Palmer

Audrey Punnett

Liza Ravitz

Jane Reynolds

Janet Robinson Vuksinick

Susan Ruskin

Dyane Sherwood

Mark Sullivan

Jeff Swanger

Robert Tyminski

Ann Ulanov

Catherine White

Richard Willetts

Steve Zimmelman

ARAS

Shira Barnett

Johanna Baruch

Jeffrey Moulton Benevedes

Norma Mendez Giron

Richard Hassen

D. Steven Nouriani

Deborah O'Grady

Jessica Sherman

Joshua Simmons
Thomas Singer

ARCHIVES

Sally Kaufmann
Bill Riess
Richard Willetts

AESTHETICS

John Beebe
Joshua Simmons
Susan Thackrey

COMMITTEE FOR THE PROTECTION OF HUMAN PARTICIPANTS

Sally Kaufmann
Margo Leahy
David Ross

CONTINUING EDUCATION OVERSIGHT

Guy Albert
Elizabeth Lewis
Karen Naifeh
Anna Spielvogel
Catherine White

DEVELOPMENT

Guy Albert
Michael Bala
John Beebe
Michael Dean
Deborah Dunning
Adam Frey
Louise Heyneman
Margo Leahy
Michael Marsman

Deborah O'Grady
Audrey Punnett
Ann Strack
Charlotte von der Hude

DIVERSITY & INCLUSIVITY

Rusa Chiu
C. Shoshana Fershtman
Lynn Alicia Franco
Marisa Guardado
Dominque Lambert-Blum
Gordon Murray
Karen Naifeh
Anna Spielvogel
Mario Starc
Alan Vaughan

ENDOWMENT

Sarah Brown
Sally Kaufmann
Margo Leahy
Susan Ruskin
Richard Willetts

EXTENDED EDUCATION

Michael Bala
Brianda DeCastro
Juliana De Oliveira Campos
Susan Easton
Lynn Alicia Franco
Adam Frey
Steven Frus
Robin Greenberg
Helen Marlo
Margaret Neuberger
Sanford Perlman
Blake Rawdin
Yvonne Smith Tarnas

Susan Thackrey
Susan Williams

FINANCE

Adam Frey
Christine Hejinian
Sally Kaufmann
Margo Leahy
Rob Tyminski

FRIENDS OF THE INSTITUTE

Anne Averill
Shira Barnett
Johanna Baruch
Gail Grynbaum
Colleen Lix
Deborah O'Grady
Sandi Peters
Bill Riess
Phyllis Stowell

INSTITUTE RELOCATION

John Beebe
Paul Bendix
Helen Degenhardt
Ben Golvin
Paul Martin
Katherine Olivetti
Ruth Palmer
David Prowler
Kim Rice
Steve Rood
Joshua Simmons
Susan Thackrey

INTERNATIONAL ANALYTICAL SCHOLAR

John Beebe

Misser Berg
Joe Cambray
Cai Chenghou
Chris Cunningham
Jeptha Evans
Shen Heyong
Rona Hu
Justin Hecht
Zhong Jiangying
Zhong Jie
Francis Lu
Liza Ravitz
Yvonne Smith Tarnas
Mario Starc
Yasuhiro Tanaka
Katy Wray

JUNG JOURNAL

Nickie Amerius-Sargeant
Jason Baynes
Carolyn Bray
Constance Burton
Susan Calfee
Betsy Cohen
Adam Frey
John Gosling
Robin Greenberg
Frances Hatfield
Helen Marlo
Kathleen Murphy
Katherine Olivetti
Audrey Punnett
Liza Ravitz
Grace Reid
Ellen Siegelman
Laura Soble
Ann Strack

Janice Teece
Caterina Vezzoli

LIBRARY

Guy Albert
Ninna Angleryd
Larry Ball
John Beebe
Sally Kaufmann
Calvin Li
Felicia Matto-Shepard
Dee Stump

NOMINATING

Peter Holland
Elizabeth Lewis
Susan Ruskin
Paul Watsky

NORTH-SOUTH

Felicia Matto-Shepard

PERSONNEL

Carolyn Bray
Jean Kirsch
Shirley Kaiser
Pat Katsky
Margo Leahy
Katy Wray

PROFESSIONAL STANDARDS

Claire Allphin
Carolyn Bray
Susan Calfee
Valerie Hone
Gordon Murray
Bonnie Payne

PUBLIC SERVICE FELLOWSHIP

Jim Bae
Susan Bostrom-Wong
Rusa Chiu
Lauren Cunningham
Margo Leahy
Steve Hargis-Bullen
Carol McRae

PUBLICATIONS

John Beebe
Helen Marlo
Rob Tyminski

REFERRAL

Beth Barmack
Claire Costello
Mario Starc
Mark Sullivan

RETREAT

Anett Atman
Dominique Lambert-Blum

SCHOLARSHIP

Susan Bostrom-Wong
Steve Joseph
Margo Leahy

TRAINING OUTREACH

C. Shoshanna Fershtman
Kathleen Murphy
D. Steven Nouriani
Bill Riess
Yvonne Smith Tarnas
Mario Starc
Paul Watsky

WHITNEY CENTER

Kai Arden
Shira Barnett
Ellen Becker
Connie Burton
Dee Stump
Mary Valtierra

Interns

David Brown, MA
Monique De Sousa Damroth, MS
Brianda DeCastro, MA
Juliana Dors Tigre da Silva, MS
Maria Linsao, MA
Eva Pastalkova, MA
Seth Rogers, MA
Logan Schneiderman, MA
Ryan Stubblefield, MA

Analysts

–Seeing Extern Patients
Naomi Azriel, MFT
Diane Deutsch, PhD
Christine Hejinian, PhD
Deborah Igoa-Kuhn, MFT
Sally Kaufman, MD
Kathleen Murphy, LCSW
Jessica Sherman, MFT
Laura Soble, MFT, REAT, CST-T
Mario Starc, MSW, PhD
Mark Sullivan, PhD, MFT
Yvonne Smith Tarnas, MFT, PhD

Candidates

–Seeing Extern Patients
Takako Ainsworth, LCSW
Raymond Buscemi, PsyD
Roser Camats-Falip, LMFT

Isabelle DeArmond, PhD
Deborah Dunning, MFT
Michael Grubb, PhD
Marisa Guardado, LCSW
Juan Ibarra, LCSW
Jessica Kilborn, MFT
Melissa Kohner, PsyD
Michelle Krezanoski, LMFT, MA
Dominique Lambert-Blum, PsyD
Elly Lin, PsyD
Cameron Osborne, MFT
Cheryl Parker, PsyD
Carolina Rosales-Wyman, LCSW
Kathleen Russ, MFT
Eric Ryan, PhD
Sareena Singh, MD
Davida Solwren, LCSW
Janice Teece, PhD

Didactic Trainers

Claire Allphin, PhD
Michael Bala, MFT
Ellen Becker, MFT
John Beebe, MD
Maria Chiaia, PhD
Lauren Cunningham, LCSW
Christopher Cunningham, PhD, MFT
Diane Deutsch, PhD
Adam Frey, MBA
Monica Georgescu, LMFT
Lori Goldrich, PhD
Stacy Hassen, PhD
Frances Hatfield, PhD
Deborah Igoa-Kuhn, MFT
Sam Kimbles, PhD
Gale Lipsyte, PhD
Carol McRae, PhD
Gordon Murray, MFT
Karen Naifeh, PhD
Anna Spielvogel, MD
Jeffrey Swanger, PhD
Richard Willetts, PhD

Supervisors

Claire Allphin, PhD
Ellen Becker, MFT
Rusa Chiu, PhD
Lauren Cunningham, MSW
Karen Naifeh, PhD
Janet Robinson Vuksinick, MFT
Catherine White, PhD

WITNESS PROGRAM

Carol McRae



Goddess Ma'at - Mural from Tomb of Siptah [KV47], Luxor c.1194 BC - source image Egypt Museum - digitally repaired/reconstructed by Yala Abdullah.

INSTITUTE FINANCES | FISCAL YEAR 2020 - 2021



Atrium of new building (pots waiting to be planted).
Deborah O'Grady, Photographer; 2021.

\$.9M

Operating Income:
Includes donations, dues, tuition,
and Clinic revenue.

\$1.1M

Operating Expenses:
Includes staffing, professional services,
direct program costs and overhead.

\$1.5M

Donations received in 2020-21 applicable
to the renovation of the Institute's future
home at 2610 Mission St., including
unrestricted donations used for this
purpose.

\$5.7M

Expenses for the renovation of the
Mission St. building in 2020-21 including
architectural and engineering fees.
Simplified relocation budget is at: sfjung.org/moving/.

The Institute's audited financial statements and its annual reports to the IRS are posted on its website, www.sfung.org, under "About the Institute." | The Institute has been a registered California nonprofit public benefit corporation since 1964 and is registered with the IRS as a tax-exempt 501(c)(3) educational charity.

Gifts to the Institute may qualify as a charitable deduction for income tax purposes.

Federal tax ID number 94-6108904.

THE C.G. JUNG INSTITUTE OF SAN FRANCISCO

CURRENT INSTITUTE OFFICERS

Carolyn Bray	President
Alex Peer	Vice President
Margo Leahy	Treasurer, Finance
Claire Allphin	Secretary
Paul Watsky	Immediate Past President

CURRENT BOARD OF GOVERNORS

Anett Atman	Jean Kirsch
James Bae	Gale Lipsyte
Michael Bala	Felicia Matto-Shepard
Johanna Baruch	Gordon Murray
John Beebe	Deborah O'Grady
Jeffrey Moulton Benevedes	Meili Pinto
Susan Bostrom-Wong	Audrey Punnett
Joe Cambray	Michael Reding
Maria Ellen Chiaia	Carolina Rosales-Wyman
QiRe Ching	Susan Ruskin
Steven Frus	Suzy Spradlin
Christine Hejinian	Dee Stump
Maga Jackson-Triche	Mark Sullivan
Shirley Kaiser	Katy Wray
Sally Kaufmann	

TRANSITIONS: 2020-2021

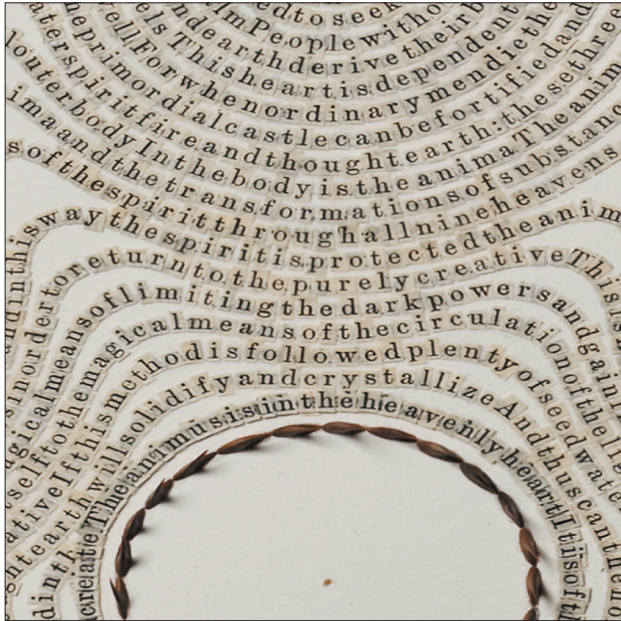
NEW ANALYSTS

Naomi Azriel, MFT; Kathleen Murphy, LCSW; Jessica Sherman, MFT; Laura Soble, MFT

DEATHS

Carl Culberson

BACK COVER: *The Secret of the Golden Flower*, (detail), 2018;
letters cut from the *Bible*, thorns; by Meg Hitchcock (visit: www.meghitchcock.com).



The C.G. Jung Institute of San Francisco

2040 Gough Street, San Francisco, CA 94109
phone: 415-771-8055 • fax: 415-771-8926
email: jungmail@sfjung.org
website: www.sfjung.org

The Institute's programs and services are provided without discrimination on the basis of race, color, national or ethnic origin, sexual orientation, gender or ability.